

# Data sheet

## Ampicillin Sodium salt

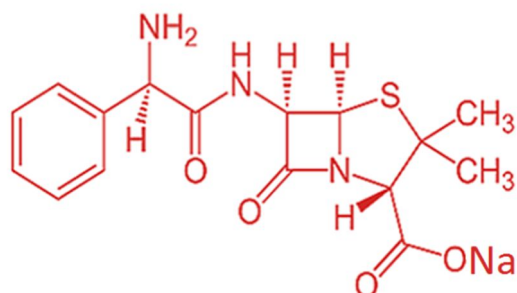
Cat. No: AB001

Cat. No: AB002

### Introduction

Ampicillin is a penicillin-like antibiotic effective against gram-positive, gram-negative and anaerobic bacteria. Differs from penicillin only by the presence of an amino group. Like penicillin, ampicillin is susceptible to  $\beta$ -lactamase, which hydrolyzes the  $\beta$ -lactam ring.

Ampicillin is widely used in cell culture as a selective agent. Inhibits bacterial cell-wall synthesis by inactivating transpeptidases on the inner surface of the bacterial cell membrane.



D-(-)- $\alpha$ -Aminobenzylpenicillin · Na

### Product Size

	AB001	AB002
Ampicillin Sodium salt	10g	25g

### Storage conditions

Store at 4° C

### Application

Used to select for ampicillin resistance in mutated and transformed cells.

### Technical specification

- ✓ CAS Number: 69-52-3
- ✓ MDL Number: MFCD00064313
- ✓ Chemical Formula:  $C_{16}H_{18}N_3O_4S \cdot Na$
- ✓ Molecular Weight: 371.39
- ✓ pH: 8.0 – 10.0
- ✓ Water content: < 2.0%
- ✓ Solubility  $H_2O$ : soluble 50mg/mL (Stock solutions should be stored at  $-20^{\circ}C$ .)

### PRODUCT USE LIMITATION

This product is developed, designed and sold exclusively for research purposes and in vitro use only. The product was not tested for use in diagnostics or for drug development, nor is it suitable for administration to humans or animals. Please refer to [www.canvaxbiotech.com](http://www.canvaxbiotech.com) for Material Safety Data Sheet of the product.

Canvax Biotech, S.L. C/Astrónoma Cecilia Payne. Edif. Canvax. 14014 Córdoba, Spain.

☎ : +34 957 348 066

☎ : +34 957 346 217

✉ : [info@canvaxbiotech.com](mailto:info@canvaxbiotech.com)



## Notes